

# Basic Keyboard Skills

The Treble Clef

& Time Signature



The note of Middle C



Quarter Notes, count as you play

## The Four Four Time Signature



The note of D



## Raining Cats & Dogs



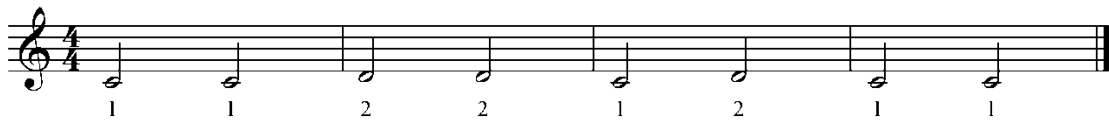
Basic Keyboard Skills

# Playing Cat & Mouse



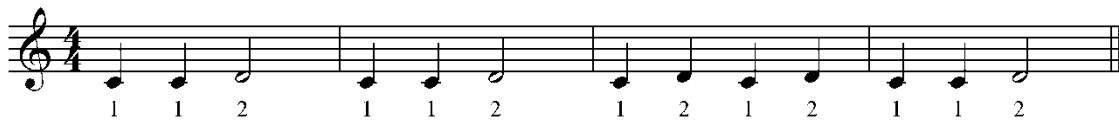
Half Notes, count as you play

# Half Time

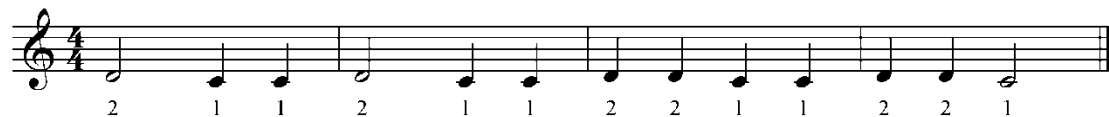


Quarter Notes & Half Notes

# Cool Cat



# Hot Dog



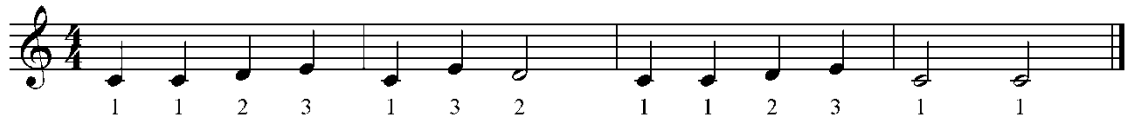
# Basic Keyboard Skills

The note of E



Say the notes & count as you play

## Elephant Walk

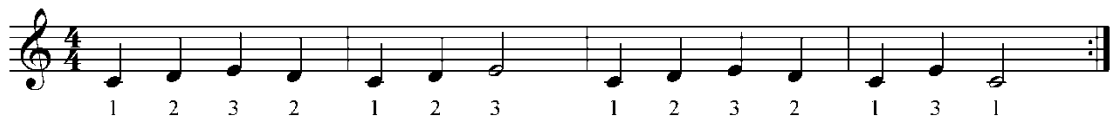


The Repeat Sign

## Play it Again, Sam



## Sunny Day



# Basic Keyboard Skills

## The Whole Note

### Whole Lot



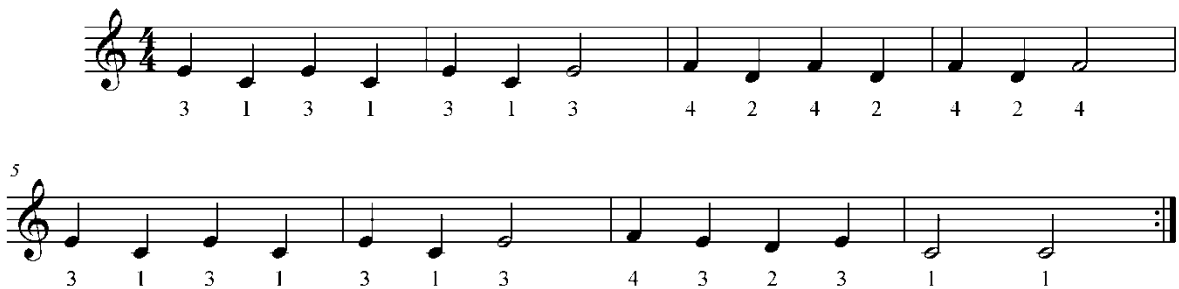
### In the Light of the Moon



## The note of F



### Frog Hop



# Basic Keyboard Skills

## The note of G



# Oats & Beans

Musical notation for the piece 'Oats &amp; Beans' in 4/4 time. The first line contains 14 notes with fingerings: 3, 3, 3, 2, 1, 1, 1, 4, 4, 4, 3, 2, 2, 2. The second line starts with a measure rest labeled '5' and contains 14 notes with fingerings: 3, 4, 5, 2, 3, 4, 5, 4, 3, 3, 2, 2, 1, 1, 1.

## All together with Chords

# My House

Musical notation for the piece 'My House' in 4/4 time. The first line contains 14 notes with lyrics: "Won't you come to my house to my house to my house?". Chords C, G, and C are indicated above the notes. The second line starts with a measure rest labeled '5' and contains 14 notes with lyrics: "Won't you come to my house to see my lit le mouse?". Chords G and C are indicated above the notes.